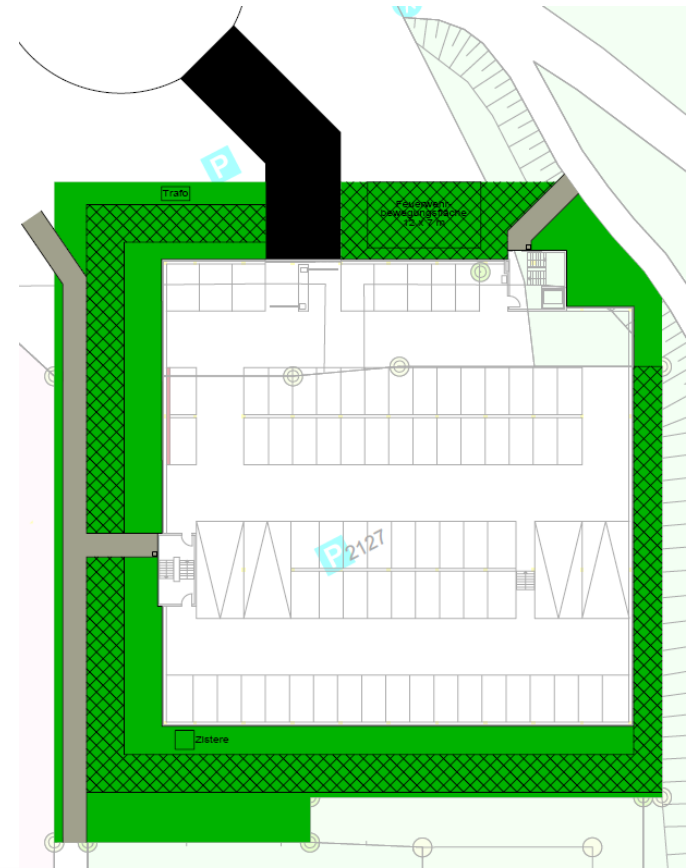
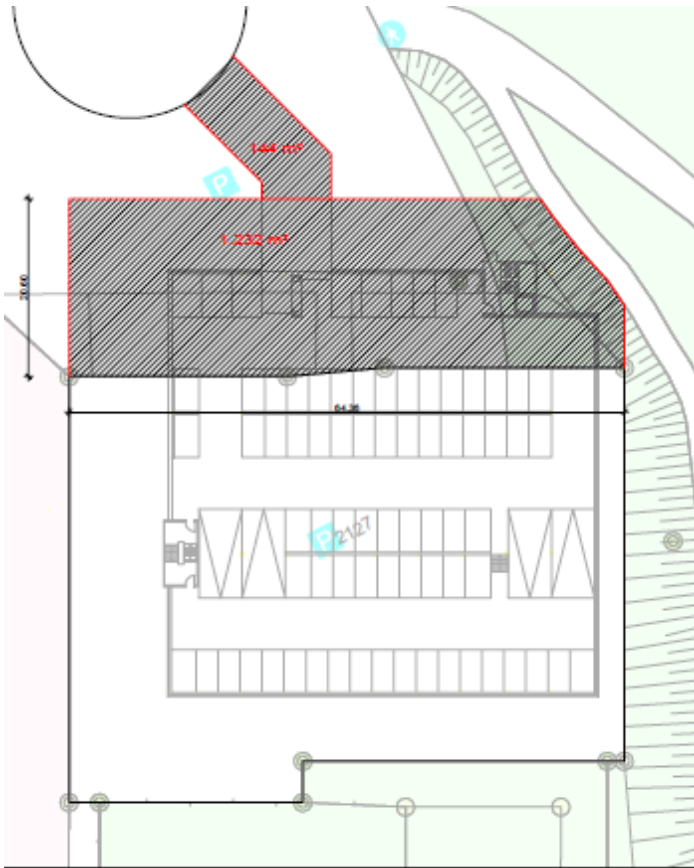
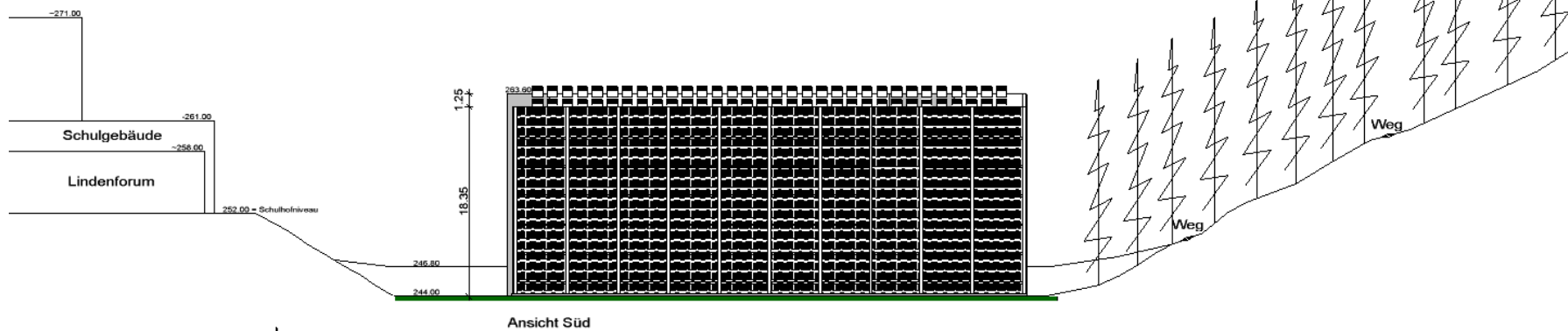
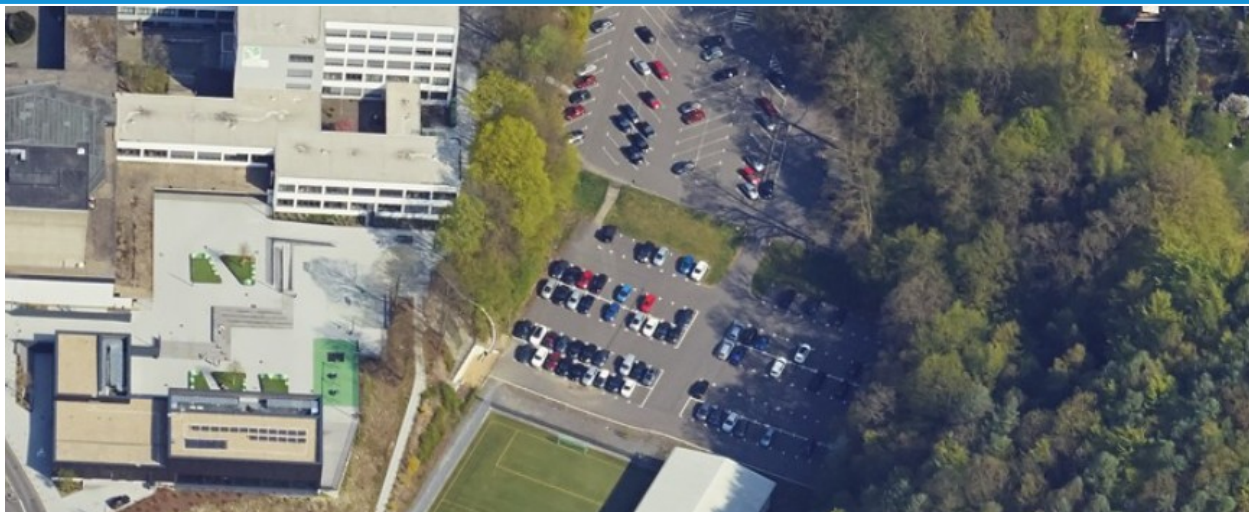


Schlüsselfertige Errichtung eines Parkhauses in Systembauweise

Reininghauser Str., 51643 Gummersbach



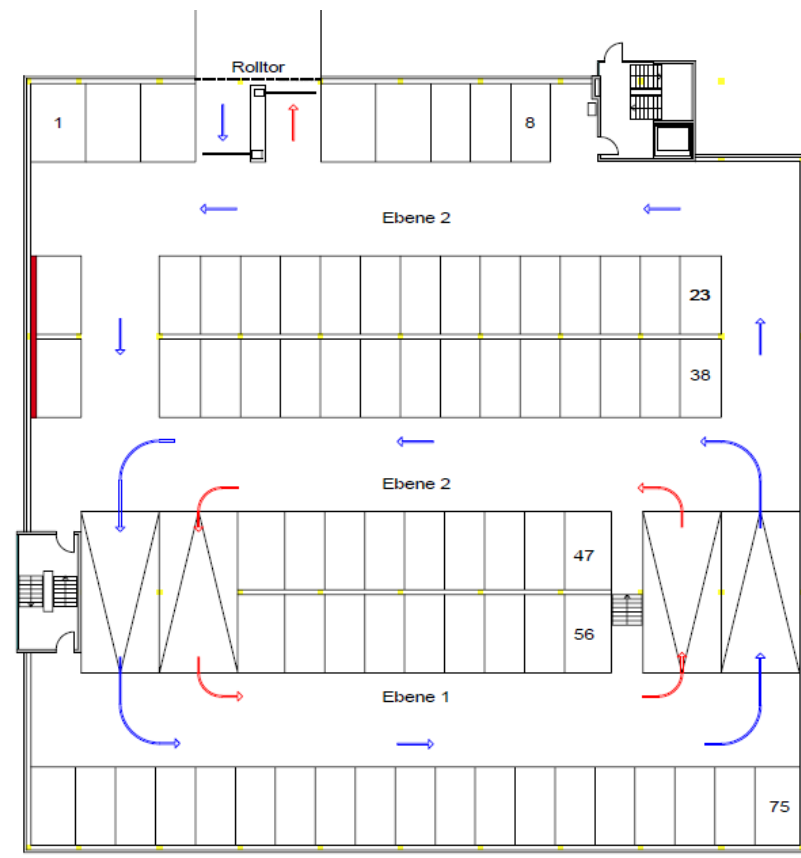
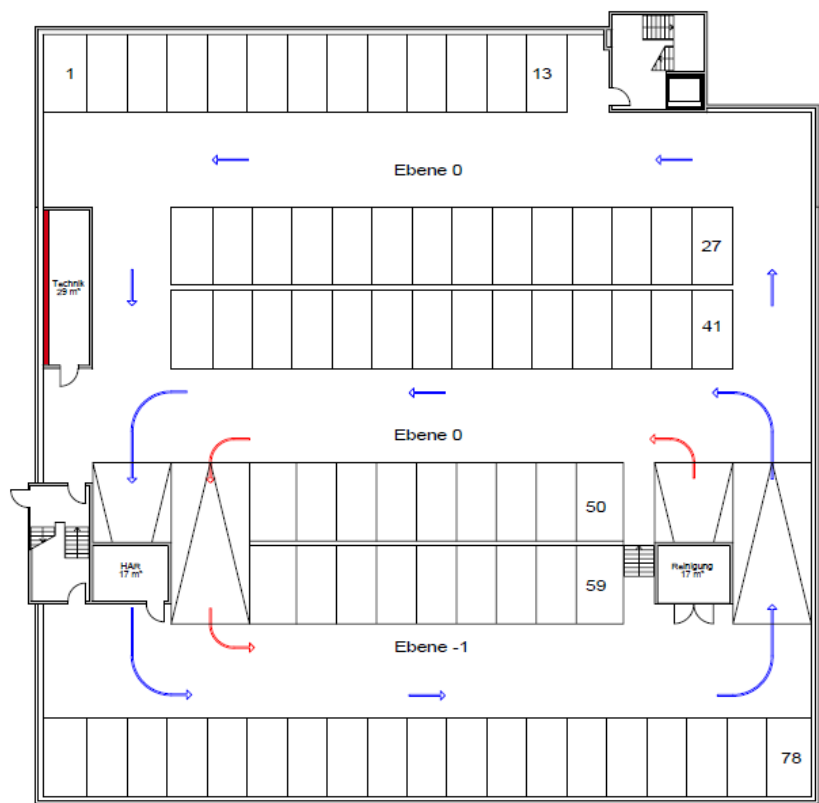






Ebene -1 / 0

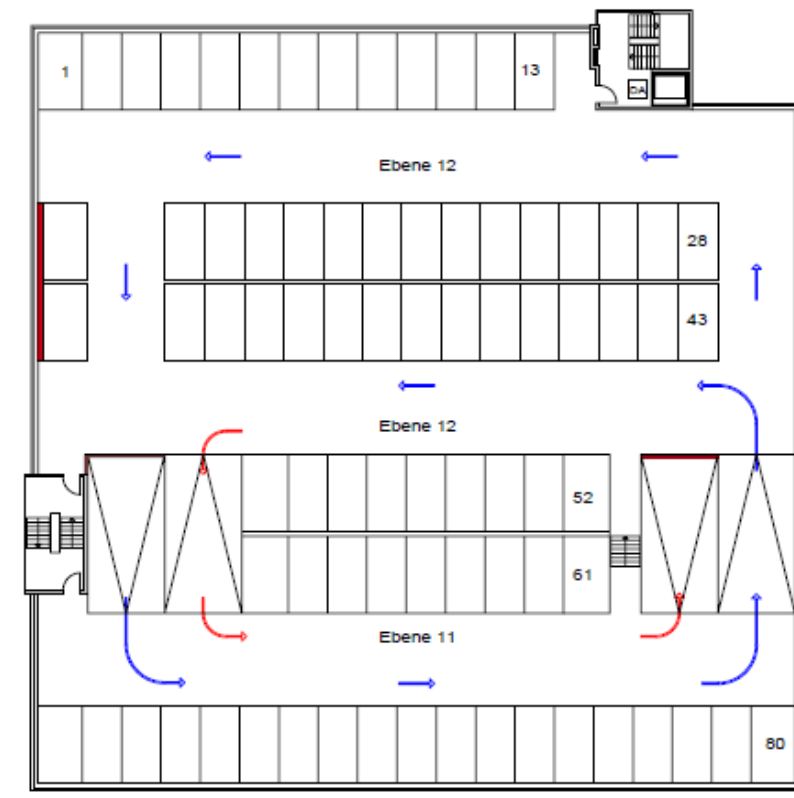
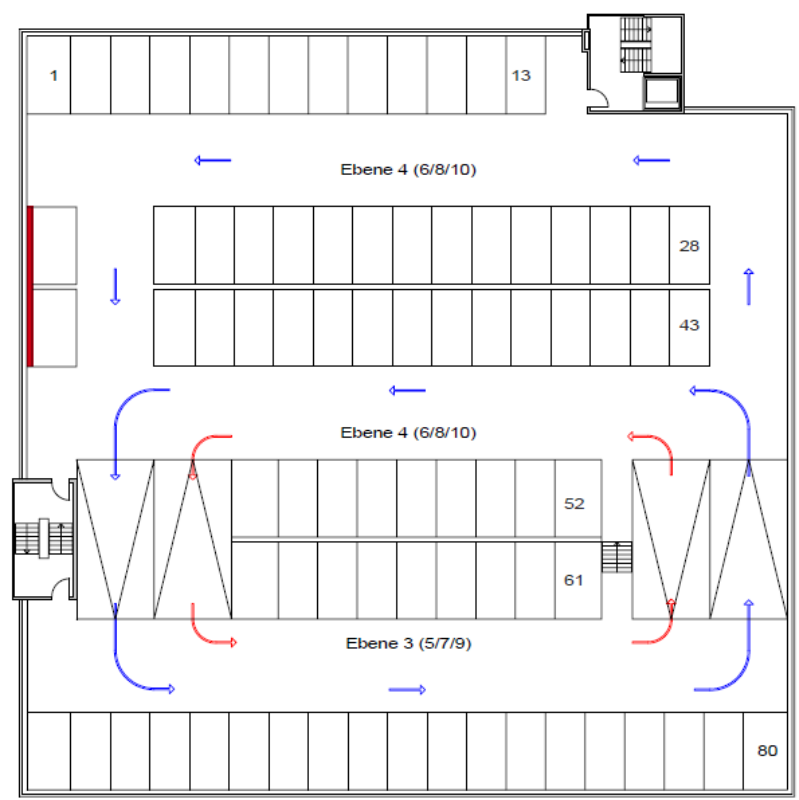
Ebene 1 / 2

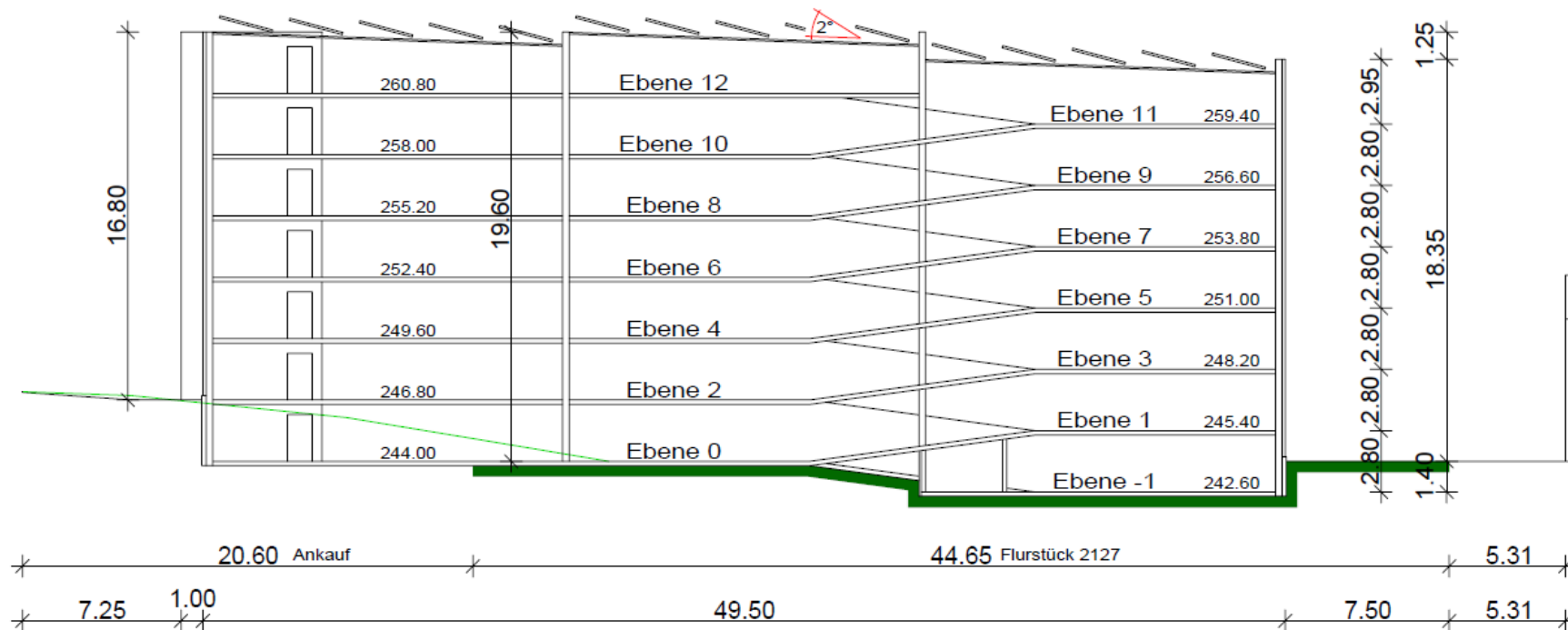




Ebene 3 / 4

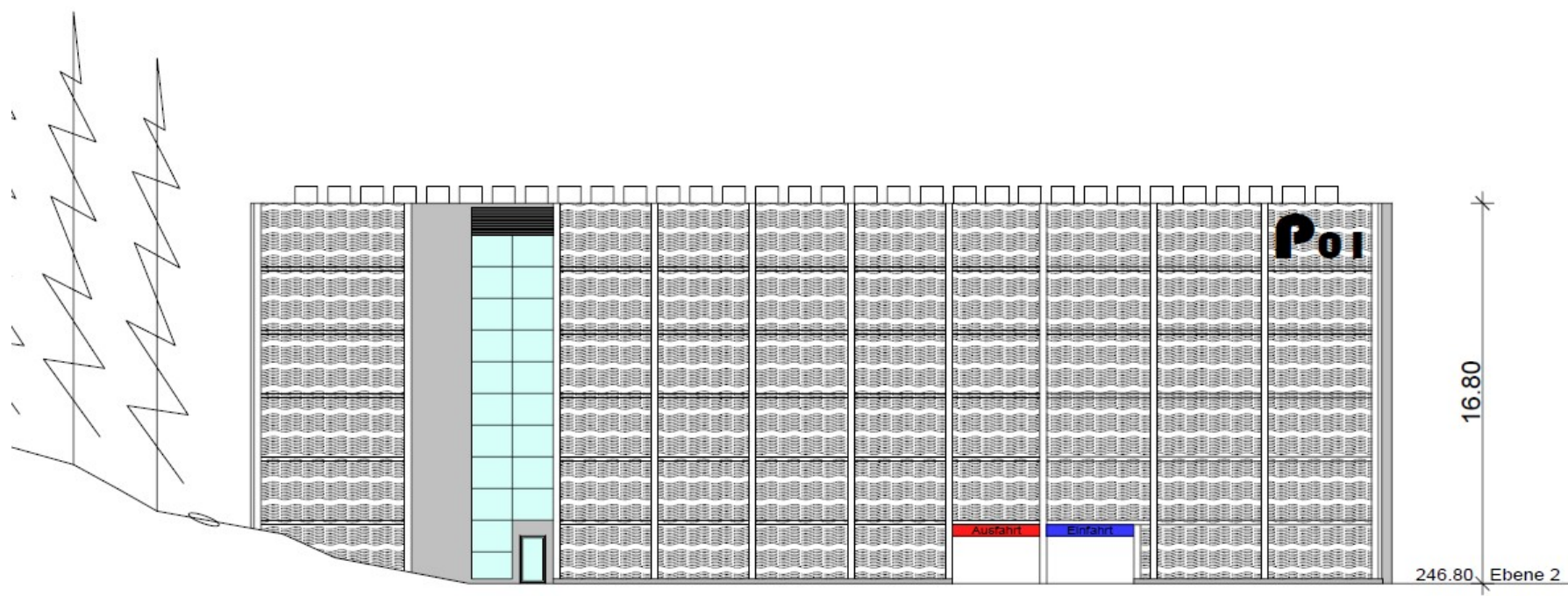
Ebene 11 / 12

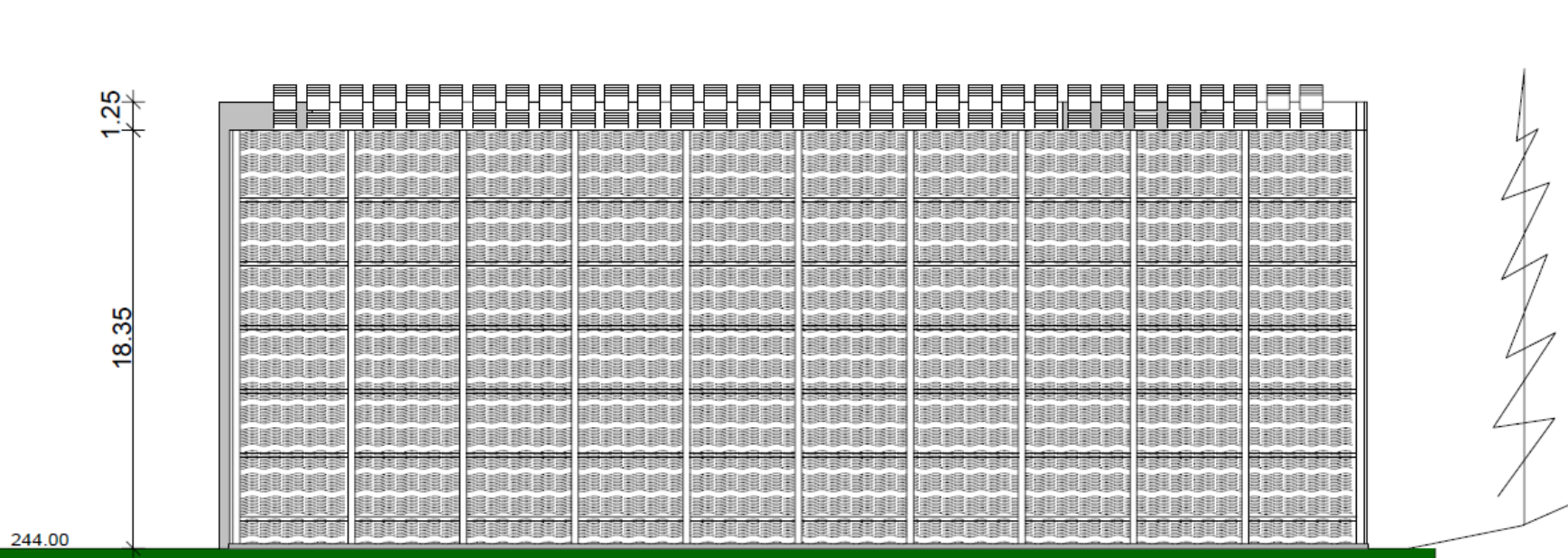






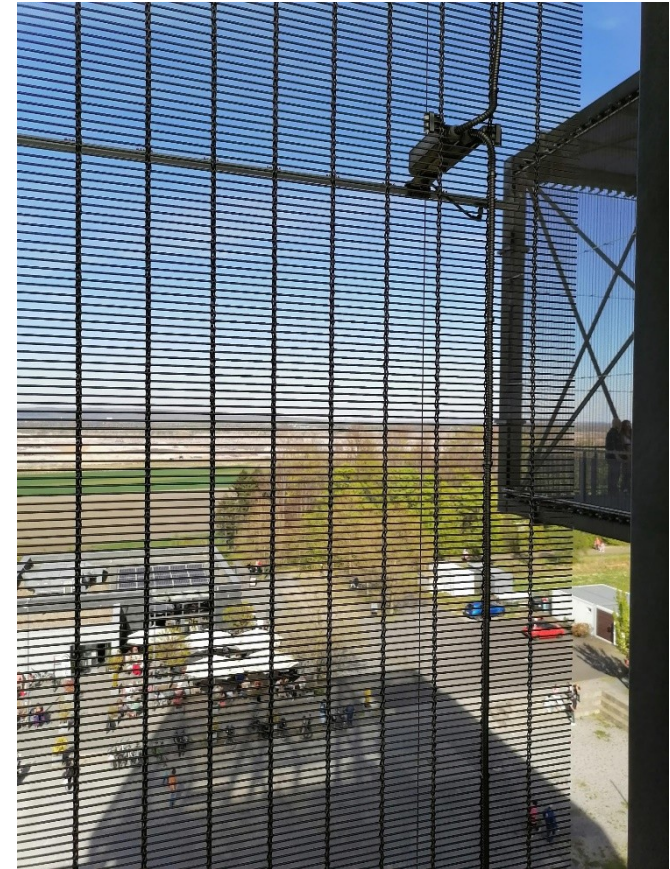
Ansicht Nord —





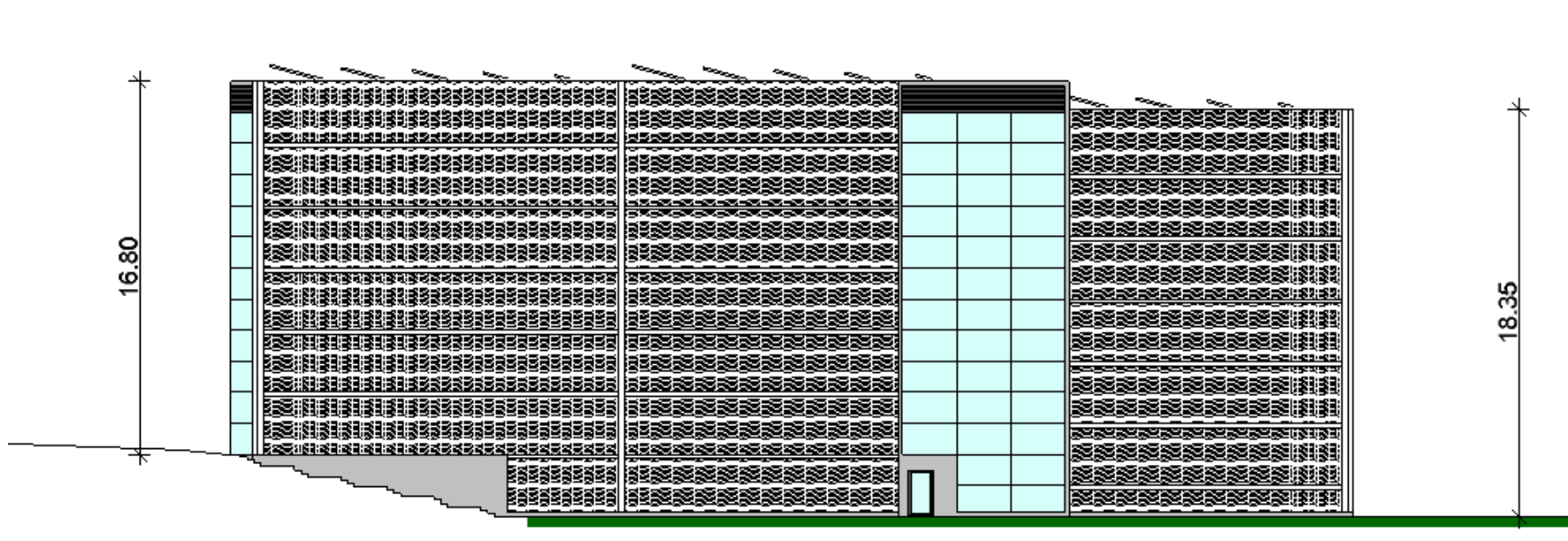


Fassadenbekleidung mögliche





Ansicht
West —





Vielen Dank für Ihre Aufmerksamkeit
Bis bald im Oberbergischen Kreis